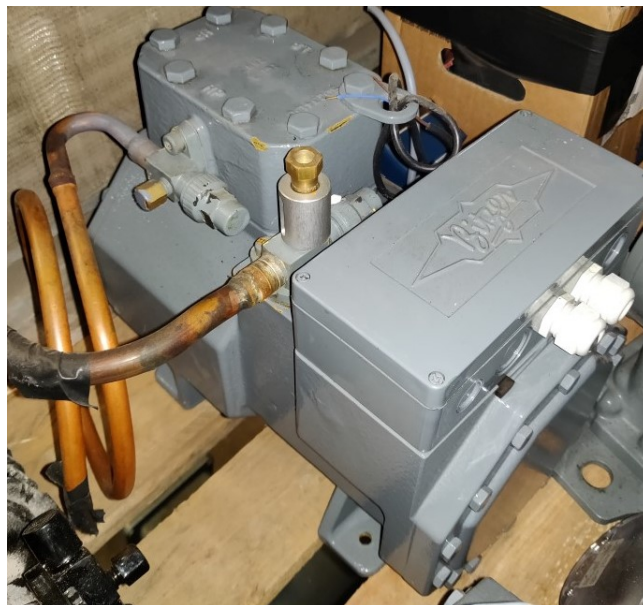


# Bitzer 2KSL-1K-40S

## Specifications

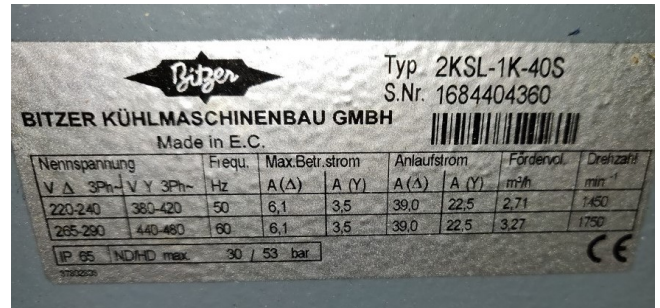
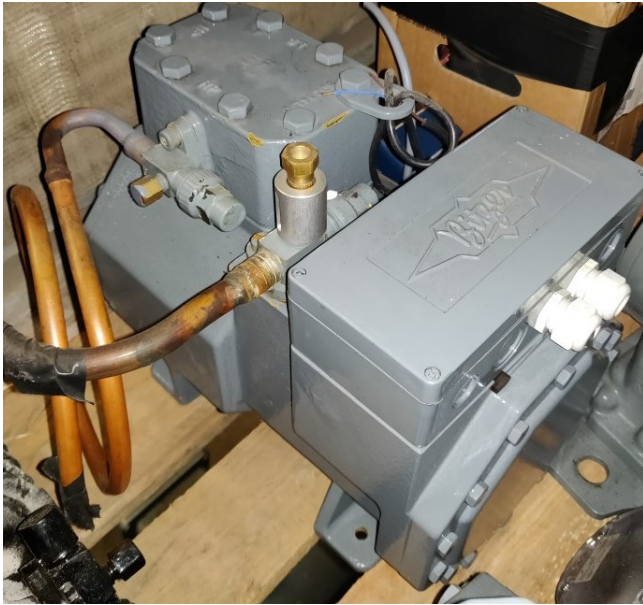
Marka	Bitzer
Typ	2KSL-1K-40S
Czynnik chłodzący	CO2
kW at -30°C/+40°C	6.1 *
kW at -40°C/+40°C	3.6 #
Uwagi	* temperature based on -10°C/-30°C // # temperature based on -10°C/-40°C
Stock	1



## Description

### Used Bitzer 2KSL-1K-40S

Used, but in good condition, deep freeze CO2 Bitzer 2KSL-1K-40S Semi-hermetic Reciprocating Compressor. For all the other specs (if available), see the picture of the manufacturer model plate or the attached pdf file. \*Why choose for HOSBV? We are not only the largest used refrigeration specialist in Europe, but also, we deliver all equipment including an extensive test, warranty and industrial cleaning. \*Optional we can also arrange the logistics.



BITZER Software v6.10.2 rev2250 15.10.2019 / All data subject to change. 1 / 4

**Selection: Semi-hermetic Reciprocating Compressors**

**Input Values**

Compressor model: 2KSL-1K  
Mode: Refrigeration and Air conditioning  
Refrigerant: R744  
Reference temperature: 25 K  
Uq subc. (in condenser): 0 K

Suct. gas superheat: 10,00 K  
Operating mode: Subcritical  
Power supply: 400V/3-50Hz  
Capacity control: 100%  
Useful superheat: 100%

**Result**

Q [W]  
Q<sub>u</sub> [W]  
P [kW]  
I [A]  
Q<sub>c</sub> [W]

Cooling capacity  
Evaporator capacity  
Power input  
Current  
Condenser Capacity (w. HX)

COP [-]  
m [kg/h]  
Op.  
th [°C]

COPIER  
Mass flow  
Operating mode  
Discharge gas temp. w/o cooling

tc	to	-25°C	-30°C	-35°C	-40°C	-45°C	-50°C	-55°C	-60°C
-30°C									
Q [W]			5834	4532	3437	2541			
Q <sub>u</sub> [W]			5834	4532	3437	2541			
P [kW]			0,77	0,83	0,85	0,83			
I [A]			2,56	2,60	2,62	2,60			
Q <sub>c</sub> [W]			6563	5322	4243	3331			
COP [-]			7,60	5,45	4,05	3,06			
m [kg/h]			71,8	56,1	42,8	31,8			
Op.			Standard	Standard	Standard	Standard			
th [°C]			23,4	30,9	33,4	34,6			
-10°C		7622	6107	4800	3689	2761	2011		
Q <sub>u</sub> [W]		7622	6107	4800	3689	2761	2011		
P [kW]		0,99	1,01	1,05	1,04	0,99	0,92		
I [A]		2,66	2,74	2,78	2,77	2,73	2,67		
Q <sub>c</sub> [W]		8481	7066	5797	4675	3703	2887		
COP [-]		8,44	6,05	4,58	3,55	2,78	2,18		
m [kg/h]		100,8	81,0	63,9	49,4	37,2	27,3		
Op.		Standard	Standard	Standard	Standard	Standard	Standard		
th [°C]		26,9	37,7	50,1	64,8	83,1	106,9		
0°C		6310	5014	3895	2941	2142			
Q <sub>u</sub> [W]		6310	5014	3895	2941	2142			
P [kW]		1,30	1,32	1,28	1,21	1,11			
I [A]		3,02	3,04	3,00	2,93	2,83			
Q <sub>c</sub> [W]		7549	6270	5116	4089	3195			
COP [-]		4,84	3,79	3,03	2,43	1,93			
m [kg/h]		91,4	72,8	56,8	43,1	31,6			
Op.		Standard	Standard	Standard	Standard	Standard			
th [°C]		52,2	64,0	77,8	94,9	117,8			

- No calculation possible (see message in single point selection)  
\*According to EN12590 (10K suction gas superheat, 0K liquid subcooling)

**Application Limits 2KSL-1K**